

D

D

C

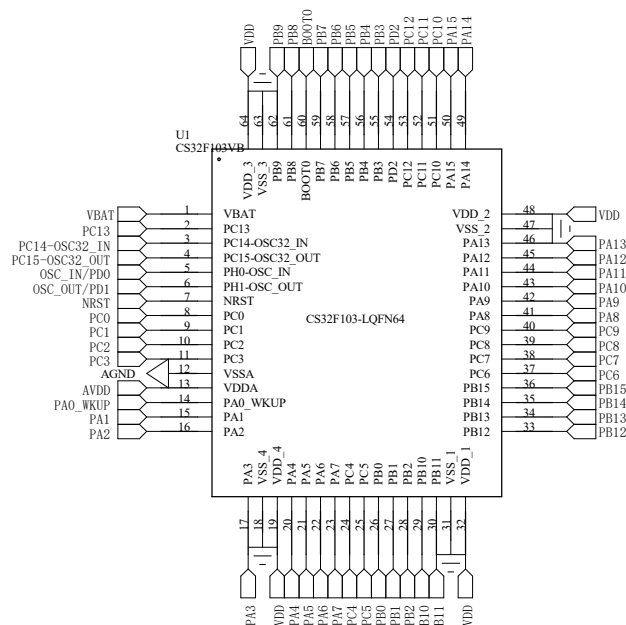
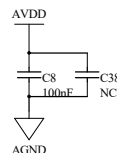
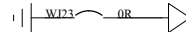
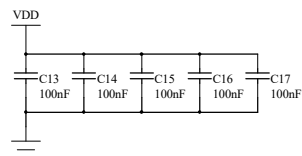
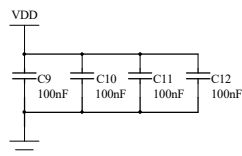
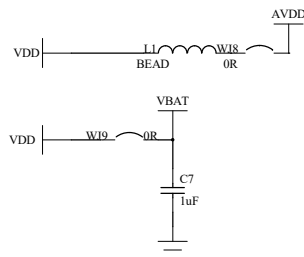
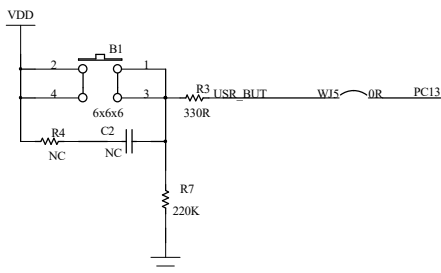
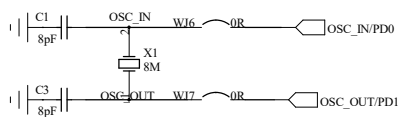
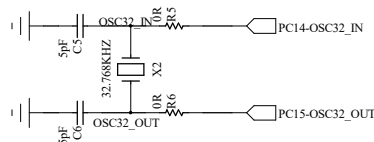
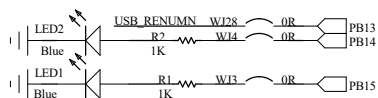
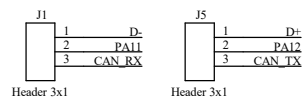
C

B

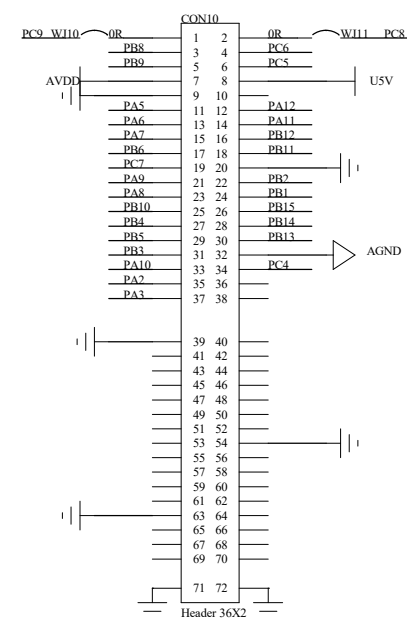
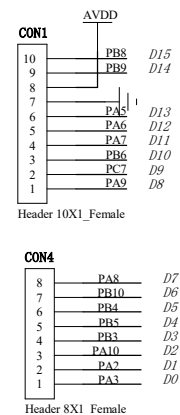
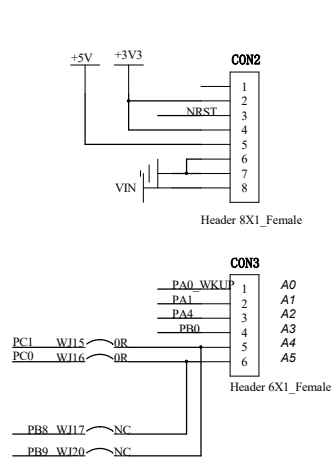
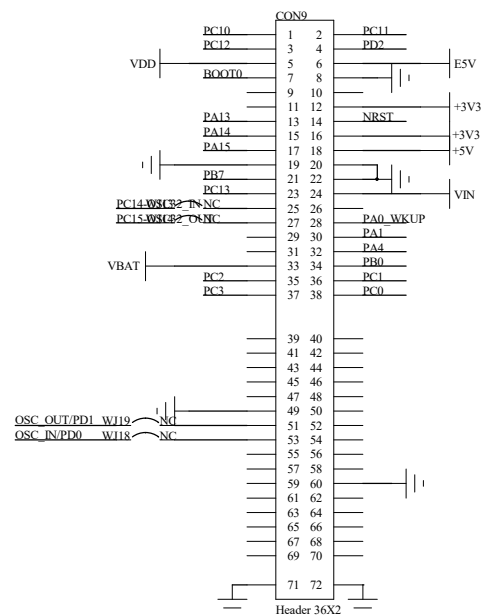
B

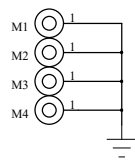
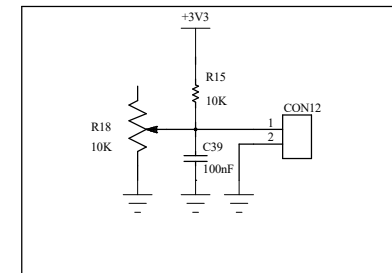
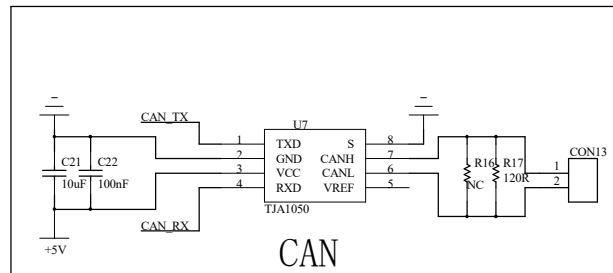
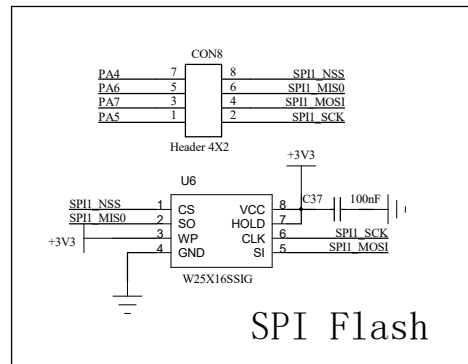
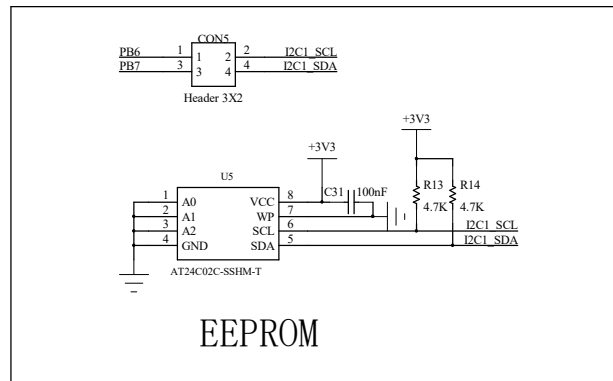
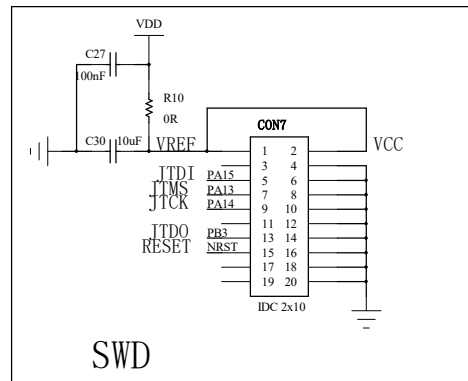
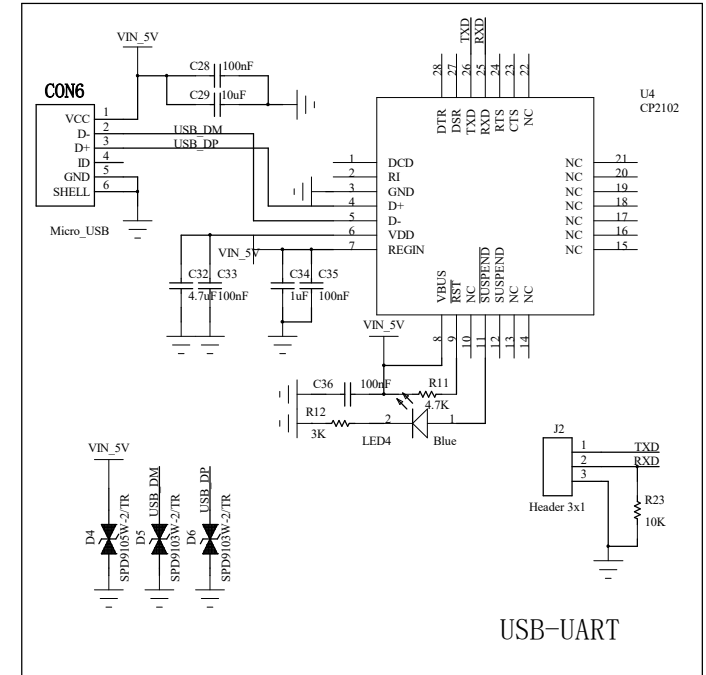
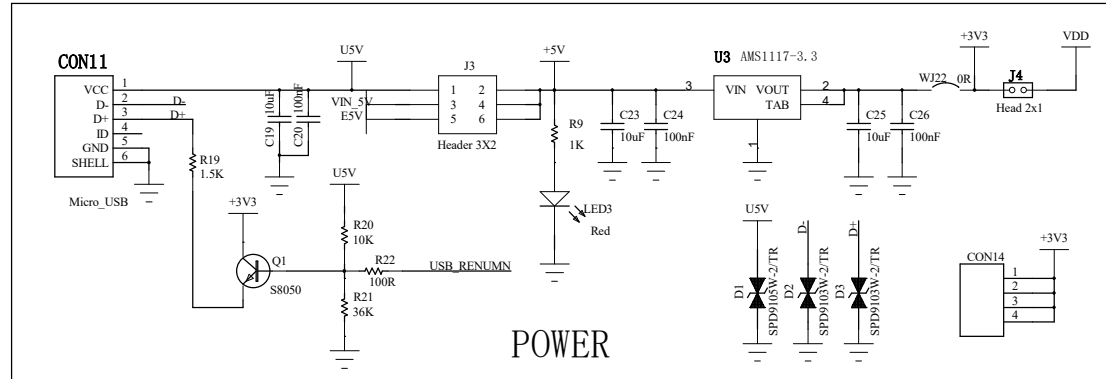
A

A



Extension connectors





		A3
PROJECT: 项目名称	CS32F103_LQFP64 开发板	VER: 版本号 1.1
TITLE: 名称	POWER	Page: 页码 4 5
Drawn By: 制图	DATE: 日期	
Checked By: 审核	DATE: 日期	
Approved By: 批准	DATE: 日期	

History

Revision	Data	Description
V1.0	2021-12-10	N/A
V1.1	2022-2-24	1. 增加CAN接口电路, 跟USB共用PA11, PA12; 2. 去掉DC座子, 改为micro接口; 3. 增加一路可调电阻; 4. EEPROM I2C增加上拉电阻;5. 串口3改为PB10, PB11; 6. USB增加ESD二极管